

KNYPERSLEY FIRST SCHOOL



WELCOME TO YEAR 4

2025





WHAT WE'LL DISCUSS TODAY

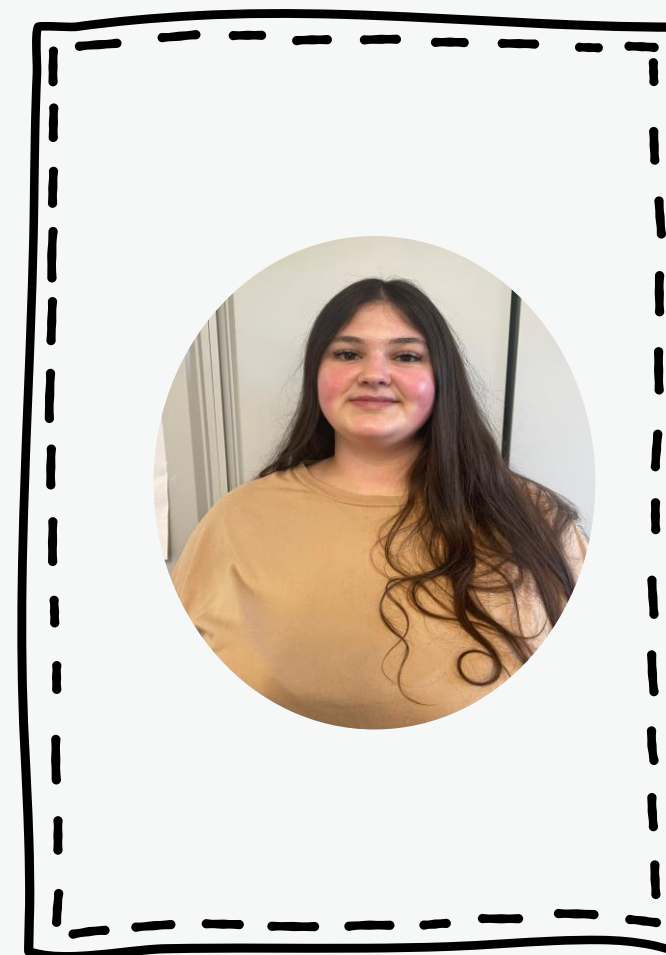
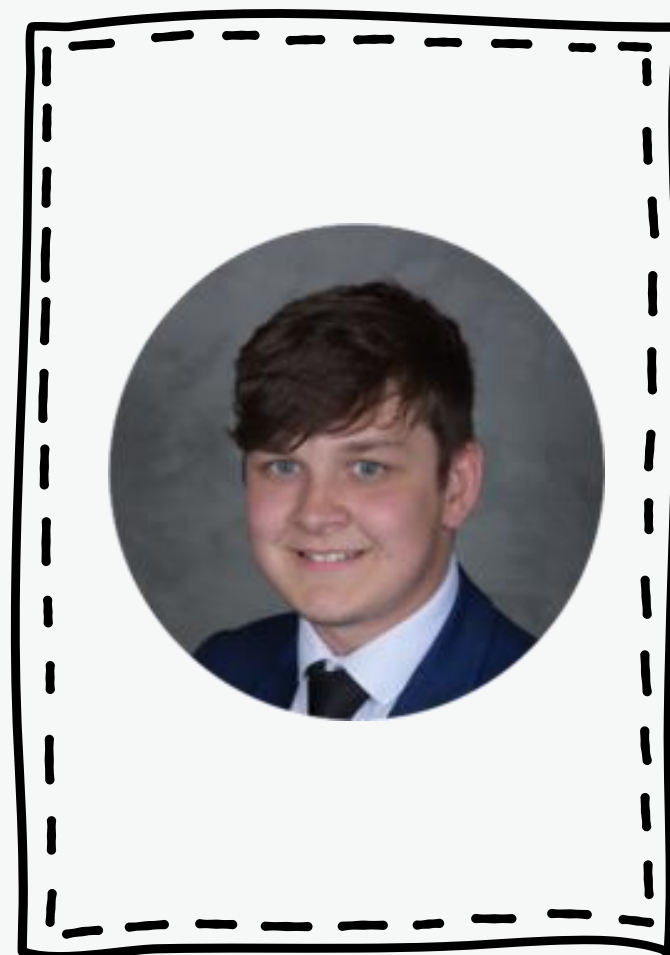
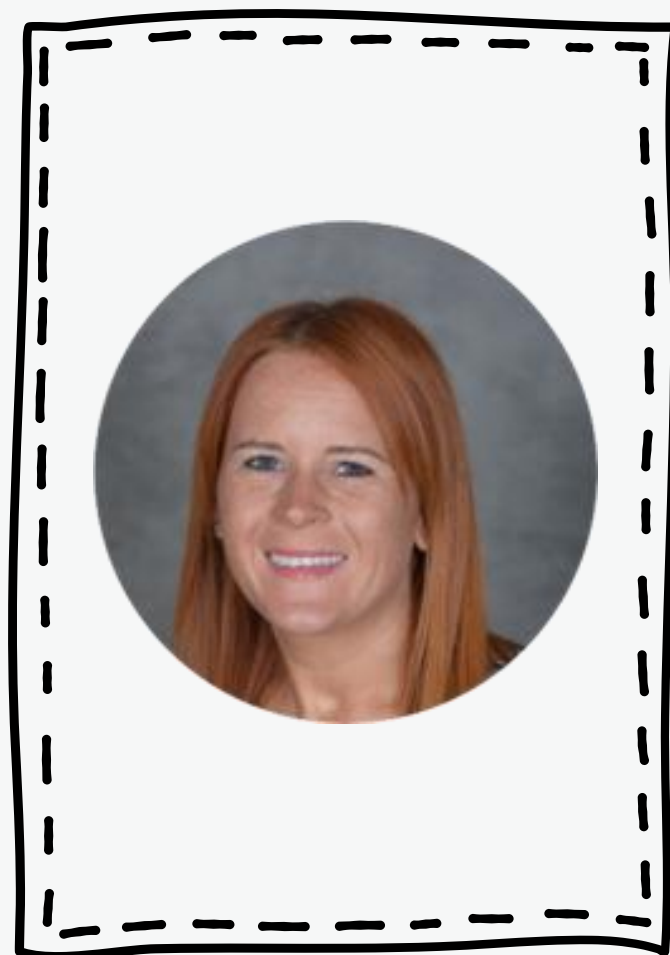


- School website
- Attendance
- Behaviour Policy
- Communication
- Class Curriculum Overview
- Core subject content
- Key days i.e. swimming/ PE





INTRODUCTION TO THE YEAR 4 TEAM



W E L C O M E

SCHOOL WEBSITE

<http://knypersley.staffs.sch.uk/>

Policies



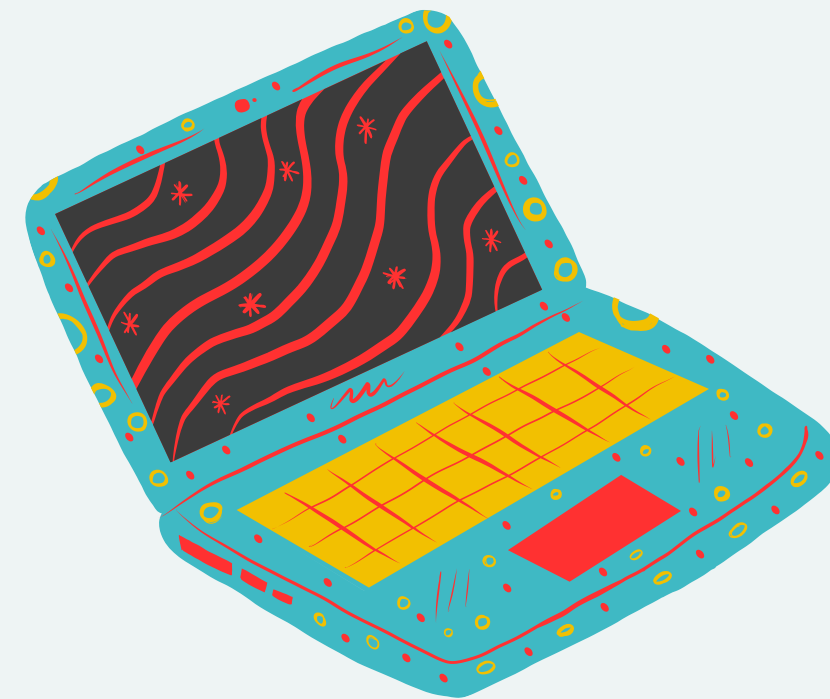
Newsletter – Online/ via Arbor (paper copies available via the school office).

E-Safety Guidance

Safeguarding page

PTFA information

School Calendar



Everything you need to know is on our website!

COMMUNICATION

We value your communication and feel that it is important that everyone feels heard and valued within our school community.

Below is an outline of the channels of communication within our school:

Arbor

Arbor is our main platform for direct communication for staff and parents. Arbor messages are checked before school and after school by staff between the hours of 8:30-5:30pm. Mrs Taylor in the office checks Arbor frequently throughout the day. Please use Arbor for non-urgent messages, clubs and parent's evening appointments.



Weekly Drop-in

Beyond the formal parents meeting events noted above, our school has always offered a night during every school week where staff are available to answer any questions you may have or to address any concerns which may have arisen. These sessions are between 3.30- 4p.m. Year 4 drop-in will be on a Thursday.

Main Office

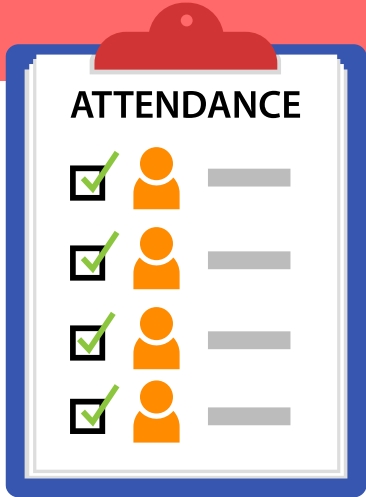
Please call the school office 01782 973810 to pass on urgent time limited messages for example- informing us that your child is absent, booking your child into Kid Zone (due to an emergency). Please be mindful that this is NOT for non-urgent messages that could be passed on by staff at the door.

Reports/ Parents Evenings.

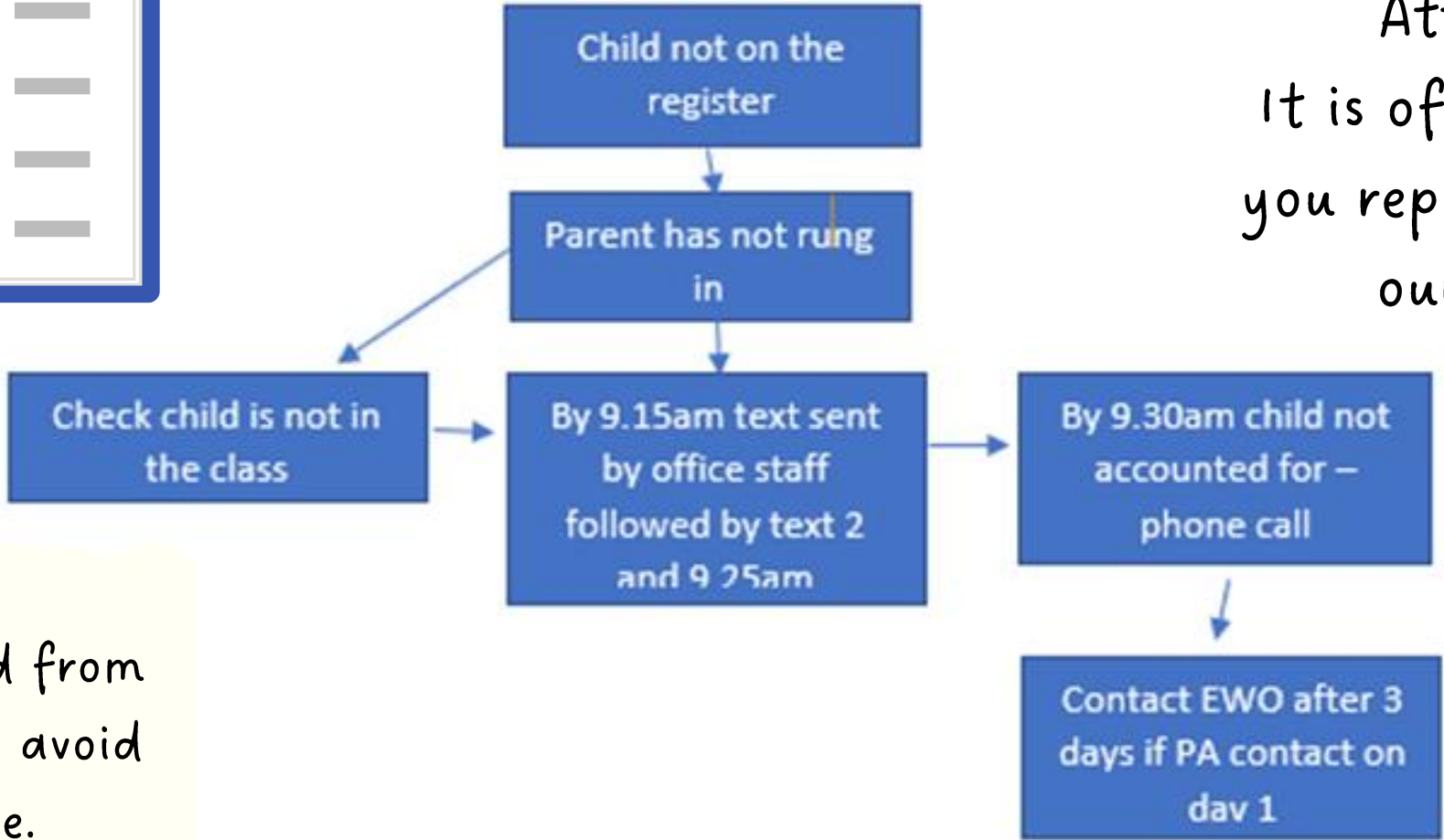
Reports are sent three times a year at the end of every term. Parent's Evenings are then run twice a year at the end of Autumn and Spring half terms in order for staff to inform you of successes and next steps. Parent's evenings can be booked via Arbor.



ATTENDANCE



Attendance – Graduated Response



Attendance is tracked daily
It is of the up-most importance that you report absences. This is to support our safeguarding procedures

- ✓ Forming good habits
- ✓ Supports progress
- ✓ Increased wellbeing
- ✓ Supports to build friendships

Holiday request forms can be collected from the school office. We encourage you to avoid taking holidays within school time.

National or Above	96.4-93%	93-90%	Below 90%
Letter 5 (sent when back to above National expectation) Pencils End of term certificate	Register inspection Letter 1 home Class teacher 'we miss <u>you</u> texts' Offer support to improve attendance Phone conversation with parent	Letter 2 sent home Continue to offer support Request medical evidence Offer to administer medicine at school Head to ring parents Class teacher sending 'excited for the week ahead/ well done for a brilliant week' text	Letter 3 sent home Referred to EWO Office to share attendance breakdown with class teachers
Office, Head & Class Teacher	Office & Class Teacher	Office, Head & Class Teacher	Persistent Absence
			Attendance clinic Home visit Referral to Local Authority-fines?
			Office, Head, Class Teacher & EWO
Improving Attendance (at any point within the cycle)			
			Letter 4 sent home (when signs of improving attendance) Postcard for improving attendance
			Head & Class Teacher



ATTENDANCE WHAT THE NEW RULES MEAN FOR ME

1

I'm a single parent of one child and we want to go on holiday for a week.

Your holiday will not be authorised and you must talk to the school before you book anything. Because your child will miss 5 school days you will be given a penalty notice fine. The fine is £160 but if you pay it in 21 days it will be reduced to £80.

£160

2

FOR EVERY CHILD A PENALTY IS GIVEN.

+ £160 + £160 + £160 + £160
4 children & 1 parent = £640
Reduced to £320 if paid in 21 days

IRREGULAR ATTENDANCE

10 IN 10

If your child is absent for 10 or more sessions in 10 weeks and their absences are unauthorised. The school will consider prosecution.

1 Day = **2** Sessions

3

FOR A FAMILY OF TWO PARENTS

+ £160 + £160 + £160 + £160
4 children & 2 parents = £1280
Reduced to £640 if paid in 21 days

4

If in any period of not more than 3 years, your child has a 2nd and 3rd leave of absence or pattern of irregular attendance...

2ND TIME

2 parents and 1 child = £320
2 children = 640
3 children = 960
4 children = 1280
No discount for early payment

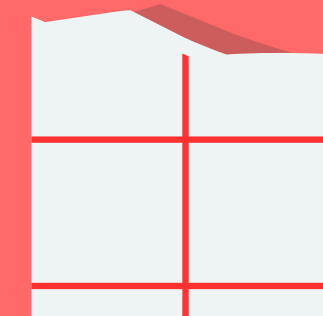
3RD TIME

A penalty notice fine will not be given. Instead, your case will be taken to court.
A magistrate can fine each parent £2500 for each child
1 parent & 4 children = £10,000
2 parents & 4 children = £20,000

ATTENDANCE



- ✓ Forming good habits
- ✓ Supports progress
- ✓ Increased wellbeing
- ✓ Supports to build friendships



POSITIVE BEHAVIOUR MANAGEMENT

<https://www.knypersley.staffs.sch.uk/wp-content/uploads/2024/07/Knypersley-Positive-Behaviour-Policy-24-Updated.pdf>

Don't forget **PIP RIP**
Praise in Public, Reprimand in Private

Ladder	Explanation
Wow!	To recognise any wow moments – learning/effort/engagement of children in the classroom, supported by House points and class reward
Super Learning	To recognise effort/achievement in a child's learning or attitude to learning, supported with house points
Excellent effort	To praise a child for good contributions/engagement/behaviour in the classroom, supported by house points
Ready to learn	All children to start here each morning. Reflect on children's attitudes to learning and the school rules.
Reminder – Make better choices	A reminder will be given to the child to make a better choice and adapt their behaviour to suit the learning environment. Ensure all reasonable adjustments have been made so that they can access learning. Staff to draw attention to the model of behaviour they do want in the classroom (Positive discipline)
Teachers Choice	The choice is taken away from the child as they cannot make the correct choices, the child will reflect on their behaviour. CT will then discuss their behaviour using the restorative conversations and scripted responses to support these discussions. The child will be allowed another chance to adapt their behaviour and follow the school rules.
Red card	Child will complete a reflection sheet and discuss the incident. These conversations will use the scripted responses. Parents will be informed and the incident will be logged on ARBOR

USE NOTE: All of the above actions will be used consistently across the school and class
teachers will use their professional judgement regarding actions to take at the most appropriate
time. It is occasionally possible to leap or accelerate movement for certain behaviours
displayed. Aggressive behaviour, fighting or swearing will trigger consequences and lead
immediately to recording on Arbor. In these cases, the teacher will use her/his professional
judgement to decide whether senior leaders should be asked to intervene immediately.

Our 3B rules are consistent from nursery to Year 4 which supports children in understanding expectations for behaviour.

Each class starts the year by writing their own class 3B expectations which develop over the years as they do themselves.

Our Positive Behaviour Policy is based upon restorative conversations and practice. Ensuring all children use mistakes as a chance to learn and better themselves.

Parents are notified if their child reaches a 'red card'. This will mean that your child has needed multiple reminders and have not been able to follow the 3Bs over a period of time.

If your child reaches 'WOW' this is down to them following the 3B expectations consistently enough to reach a reward. Moving to WOW is not done due to a one off event or learning achievement.

Follow the 3B's



SOCIAL, EMOTIONAL AND MENTAL HEALTH

What do we do in school to promote **POSITIVE** Mental Health?



Knypersley Knights
Circle times
Behaviour Ladder

We want everybody to feel
happy and safe in school.





YEAR 4 WEBPAGE/ CURRICULUM OVERVIEWS



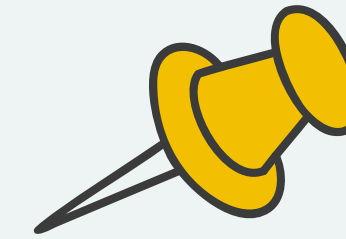
Our year group page hosts a wealth of information that staff refer to throughout the year such as:

- Curriculum Overviews – Overview of learning over the year. This is a great way to pre-teach or to engage with learning theme's as your child is immersed within them in school.
- Class Webpages
- Curriculum drivers i.e. Careers Week, Faith in Focus Etc.





READING



Children will be heard read by an adult at least once a week.

There will also be reading in Good Morning Work , sometimes with a reading buddy.

Children will take part in ERIC sessions three times a week, to promote the joy of reading and to teach specific age related reading skills.

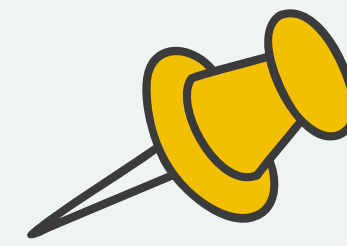
The focus in Year 4 is reading for understanding and inference. Another big focus for this year is written comprehension.

To promote a love of reading, we will visit our school library each week to select a book to share.





WRITING IN YEAR 4



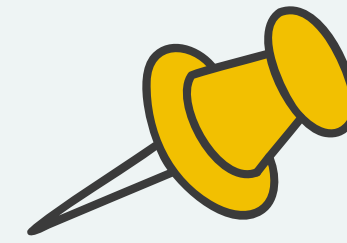
In Year 4, the main focus of our English lessons will be to write a variety of different sentence types, such as embedded clauses and expanded noun phrases. We will enjoy lots of fabulous stories to inspire our writing and gather lots of high-level language.





SPELLING

Children receive daily spelling lessons that focus on year group specific spelling rules. Spelling of the common exception words is a big focus across the school. Children will also have a login for The Spelling Shed to use at home, with games that link to their spelling words. We will update these every Friday following in-class assessments.



Spelling Shed 



MATHS



Children First
Learning Partnership
INSPIRING EXCELLENCE TOGETHER

The children are given lots of opportunities to explore new maths learning through discussions with partners and in groups; using equipment to support their understanding.

We encourage the children to represent their working out using concrete resources, pictorially, using abstract methods and then demonstrate their depth of understanding when exploring reasoning and problem-solving challenges.

In year 4, the children are encouraged to know their number facts to 1000.

Autumn term	Number Place value FREE TRIAL VIEW	Number Addition and subtraction VIEW	Measurement Area VIEW	Number Multiplication and division A VIEW	Consolidation
	Number Multiplication and division B VIEW	Measurement Length and perimeter VIEW	Number Fractions VIEW	Number Decimals A VIEW	
	Number Decimals B VIEW	Measurement Money VIEW	Measurement Time VIEW	Consolidation	Geometry Shape VIEW
				Statistics VIEW	Geometry Position and direction VIEW



MULTIPLICATION CHECK



Children First
Learning Partnership
INSPIRING EXCELLENCE TOGETHER

At Knypersley, we promote the importance of multiplication through fun games and songs.

In June, all Year 4 children take part in a nationwide multiplication check.

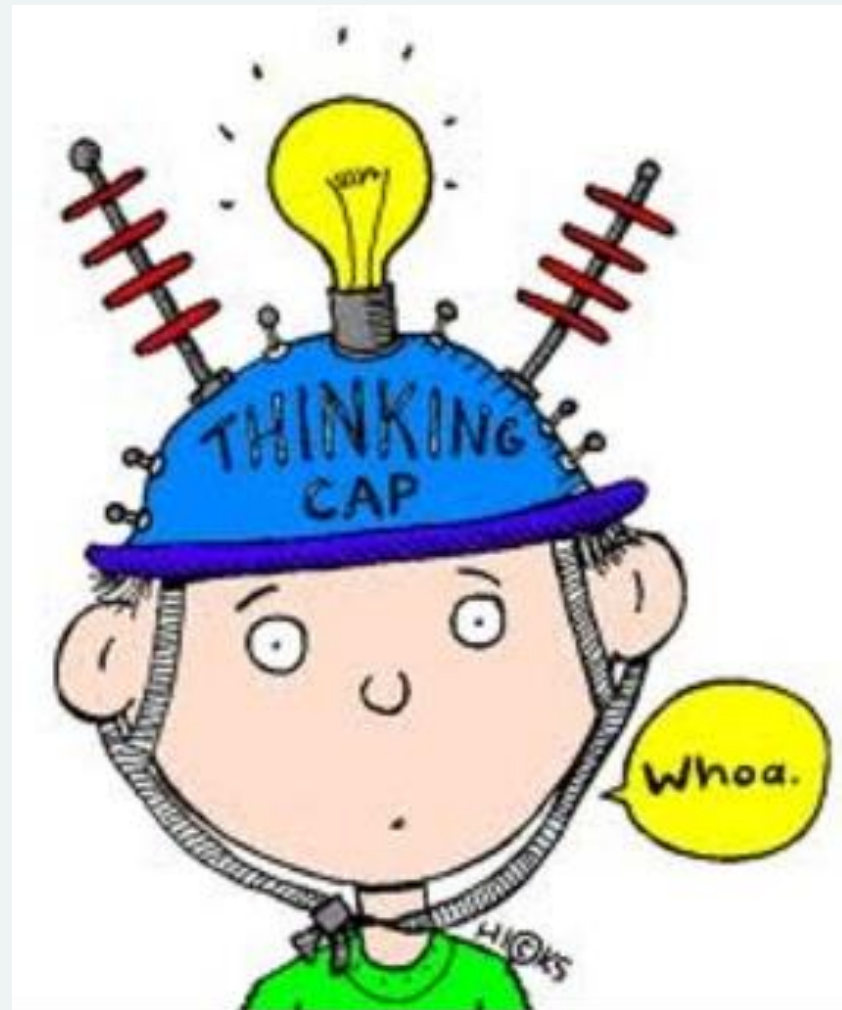
This covers all times tables from 2x table up to the 12x table with an expected 6 second recall.

TT Rockstars, MathsFrame, Hit the button.





METACOGNiTiON



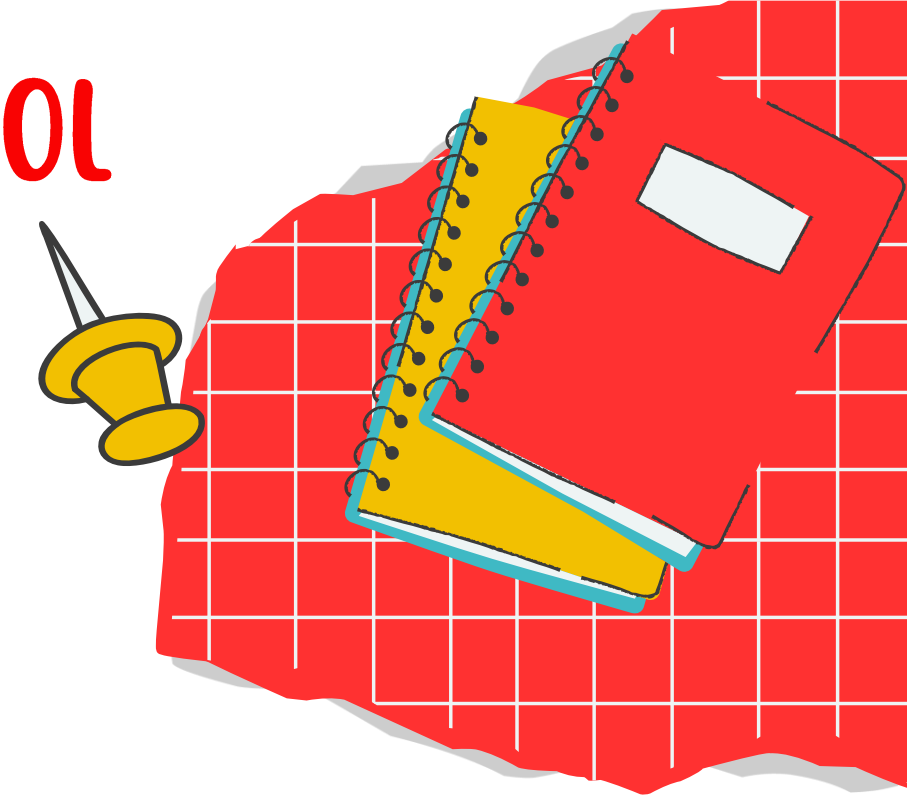
What helps me to learn best?

What might help you today with your learning?

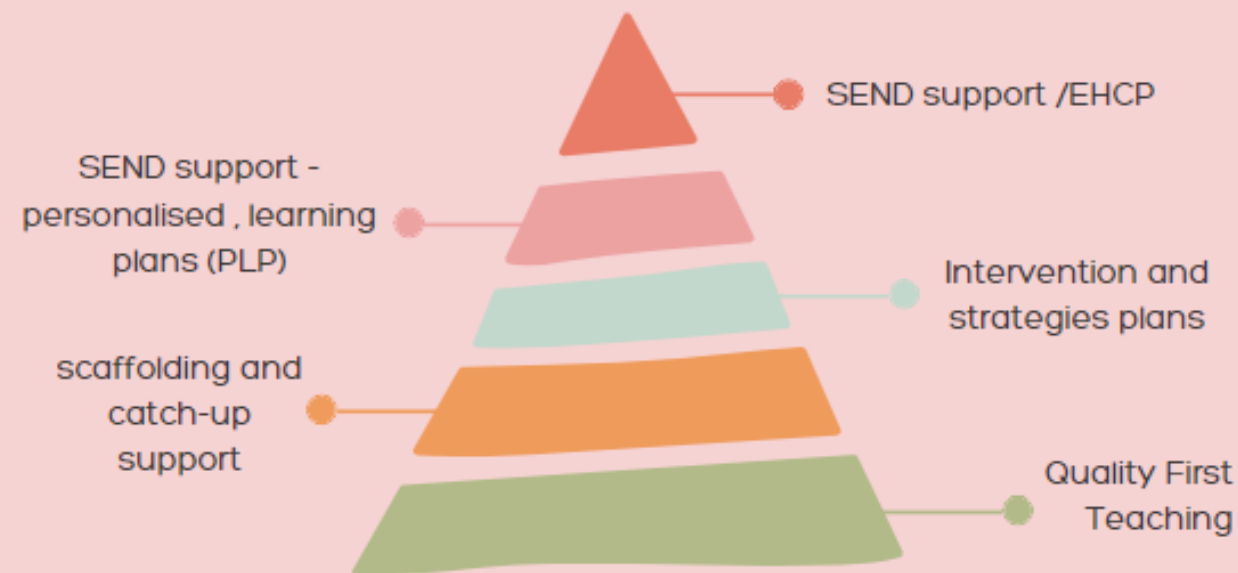
What resources do we have in our classroom?

Remember you can help yourself to learn!

SEND SUPPORT AT KNYPERSLEY FIRST SCHOOL



Graduated Response



SENDco – Miss Massey (Busy Bee classteacher)

Our weekly SENDco drop-in session is a Wednesday. To book an appointment with us please message via Arbor to aid appointment times and schedule.

Families' Health and Wellbeing

School Nurse Community drop in

For parents/carers of 5-19's and young people not in education

2nd Monday of the Month 1.30-4.30pm

The School Nurse is here to help your child feel healthy, happy and safe during their school years and to get the best from their education. If you have any concerns about their health and wellbeing please drop in to chat.

Biddulph Children's Centre
Albert Street
Biddulph ST8 6DT

We provide a confidential and friendly service

www.mpft.nhs.uk/services/health-visiting-and-school-nursing

[HTTPS://WWW.KNYPERSLEY.STAFFS.SCH.UK/SPECIAL-EDUCATIONAL-NEEDS-AND-DISABILITIES/](https://www.knypersley.staffs.sch.uk/special-educational-needs-and-disabilities/)



HOMework



Children First
Learning Partnership
INSPIRING EXCELLENCE TOGETHER

- To **read at a home** a minimum of **3 x a week** – We will reward this in school with various incentives.

- **Weekly spellings on Spelling Shed.**
- Access **TT Rockstars** to develop maths skills.





NEWSLETTER

Children First
Learning Partnership
INSPIRING EXCELLENCE TOGETHER

All important information /
dates will be on the
newsletter.

You will be emailed this
each Friday.

21/06/2024

**The 'Knypersley News'**
Learning together, learning for life!

A message from Mrs Rourke...

Our school has been a hive of activity this week with a huge range of visitors joining us to tell us about their jobs and career journeys. The children have thoroughly enjoyed hearing about new job roles and their questions have been really thoughtful. Many thanks to everyone who joined us to inspire our children and a special thank you to Mrs Harvey for organising this week I know many emails and telephone calls have been taking place for months prior to this week to make it all happen. For further details about our week please visit our [Facebook page](#).

This week is the Royal Lifesaving Society UK Drowning Prevention Week. Mrs Thwaites our Swimming Instructor has been talking to the children about the water safety code. Please visit the RLS website for further information and activities to share and discuss at home. <https://www.rls.org.uk/pages/category/drowning-prevention-week-campaign>

Our school move up day went extremely well, children settled in quickly and listening into the classrooms I could hear some lovely laughter and chatter. I do hope your children found the day useful and all their questions were answered – please make a note of the information evenings dates which take place early in July to ensure you get a chance to meet your child's new teacher and TA and hear all about the year ahead. It will also provide you with a chance to visit your child's new classroom too!

Next week we are looking forward our Health and Sports week including our Sports Days. Fingers crossed that the weather is kind to us!


Have a great weekend everyone
Mrs Rourke and Team Knypersley

Important dates coming soon...

24/6/24 Health and Sports week. Sports days :
24/6 Year 2 1.30pm
25/6 Nursery 9.30am/Reception 1.30pm
26/6 Year 3 1.30pm
27/6 Year 4 1.30pm
28/6 Year 1 1.30pm
28/6/24 Summer Fair
Open evenings 3.30pm and 6pm
1/7/24 Year 1
2/7/24 Year 2
3/7/24 Year 3
4/7/24 Year 4
5/7/24 Forest School parental engagement 9.30am—all nursery pupils

Class	Attendance
Creative Caterpillars	94.1%
Busy Bees	94%
Class 2	94.4%
Class 3	94.4%
Class 4	95.8%
Class 5	95.7%
Class 6	96.7%
Class 7	94.3%
Class 8	96.8%
Class 9	95.7%

Our whole school attendance target is 95.61%.

**This Week's winner is:**
Class 8

Please follow the following link <https://www.knypersley.staffs.sch.uk/lunch-menu/> to find our school lunch menu.
On our return we will be following **week 1** of the new **January-July** menu.

Sports Week

Next week is Sports Week—children will take part in a range of very exciting events all week. Please ensure your child comes into school daily wearing sports kit (this does not have to be their PE kit). A huge thank you to Mrs Minson for working hard to organise such an exciting week for our children! The PTFA will be selling raffle tickets on the day for £1 a strip this will be drawn at our Summer Fair on Friday.
Please see below for a list of days and times for your child's year group. Please enter your child's sports day via the forest school gates (via the car park). If you require seating for the event please feel free to bring a camp chair. Please be reminded that this event is a participation event where children and adults take part together.
Monday: Year 2 1.30pm
Tuesday: Nursery 9.30am/Reception 1.30pm
Wednesday: Year 3 1.30pm
Thursday: Year 4 1.30pm

<https://www.knypersley.staffs.sch.uk/newsletters/>



FOREST SCHOOL



Children benefit from working in a team and it improves their communication and confidence. It also helps with their problem solving skills.

Forest school sessions will be on a **Friday** with Mr Fox. We will confirm the dates in September.





GET INVOLVED!



We always need help in school. Hearing children read, photocopying, laminating, cutting out, going on visits, in the swimming pool—please speak to a member of staff if you think you would be able to help.





Join our PTFA!



**COULD YOU VOLUNTEER TO
HELP OUR PTFA?**

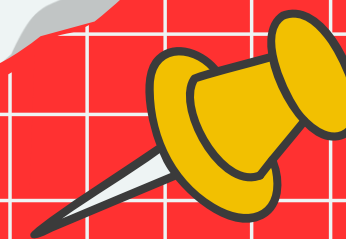
**Our PTFA support our school by raising funds to provide
resources and experiences for our children. We would love
to welcome you at our next meeting!**

Children First
Learning Partnership
INSPIRING EXCELLENCE TOGETHER



EXCITING EVENTS

Pantomime!



School disco!



Swimming



Celebration Assembly



Virtual Roman session



Transition Events





AND FINALLY ...



Year 4's **PE** day is on a **Wednesday**. Please wear your PE kit all day.

Year 4's **Swimming** day is on a **Tuesday**. Please wear your school uniform, bring your swimming kit including a swimming hat into school.

Please remove earrings before school on both PE and swimming days.

Year 4's drop in is on a **Thursday** between 3.30 and 4pm.

*Please note these days may change, we will inform you of any changes if applicable.

THANK YOU!

Do you have any questions for
me before we go?

