

KNYPERSLEY FIRST SCHOOL



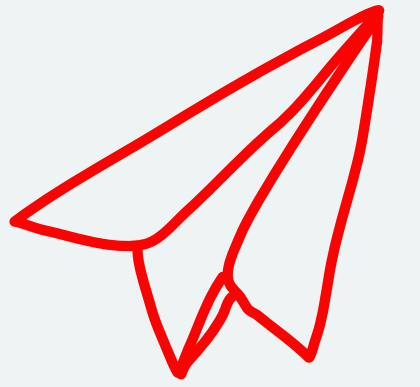
WELCOME TO NURSERY

2024





WHAT WE'LL DISCUSS TODAY



- School website
- Attendance
- Behaviour Policy
- Communication
- SEND support
- Yearly Overviews
- How to support at home
- Exciting Events
- Information Packs





INTRODUCTION TO THE NURSERY TEAM



Mrs Jones – Nursery Teacher



Miss Peers– Nursery Apprentice



Mrs Ellis – EYFS Leader





SCHOOL WEBSITE

<http://knypersley.staffs.sch.uk/>

Policies



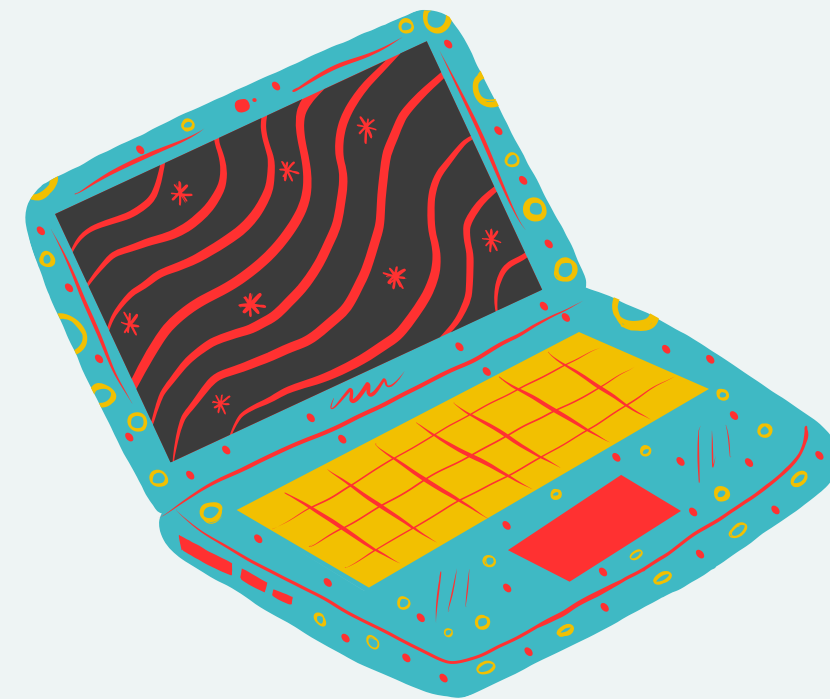
Newsletter – Online/ via Arbor (paper copies available via the school office).

E-Safety Guidance

Safeguarding page

PTFA information

School Calendar



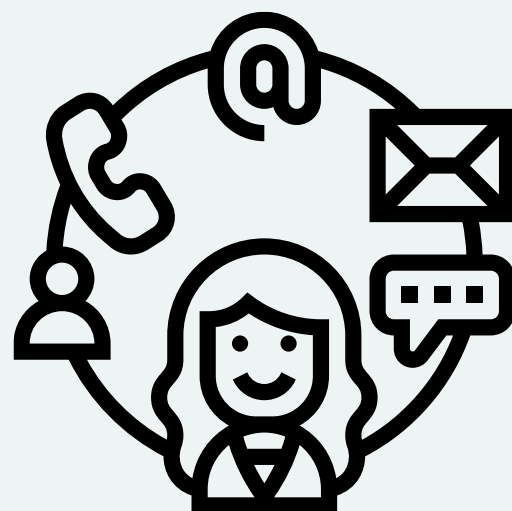
COMMUNICATION

We value your communication and feel that it is important that everyone feels heard and valued within our school community.

Below is an outline of the channels of communication within our school:

Arbor

Arbor is our main platform for direct communication for staff and parents. Arbor messages are checked before school and after school by staff between the hours of 8:30-5:30pm. Mrs Taylor in the office checks Arbor frequently throughout the day. Please use Arbor for non-urgent messages, clubs and parent's evening appointments.



Weekly Drop-in

Beyond the formal parents meeting events noted above, our school has always offered a night during every school week where staff are available to answer any questions you may have or to address any concerns which may have arisen. These sessions are between 3.30- 4p.m. Nursery drop-in will be on a Monday.

Main Office

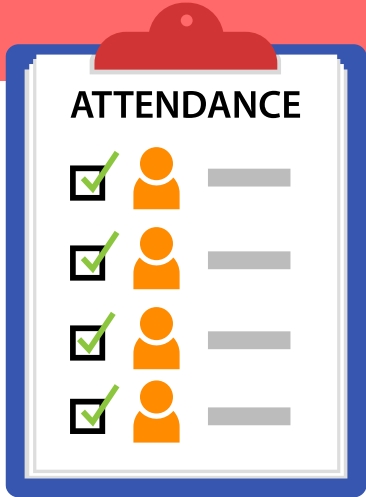
Please call the school office 01782 973810 to pass on urgent time limited messages for example- informing us that your child is absent, booking your child into Kid Zone (due to an emergency). Please be mindful that this is NOT for non-urgent messages that could be passed on by staff at the door.

Reports/ Parents Evenings.

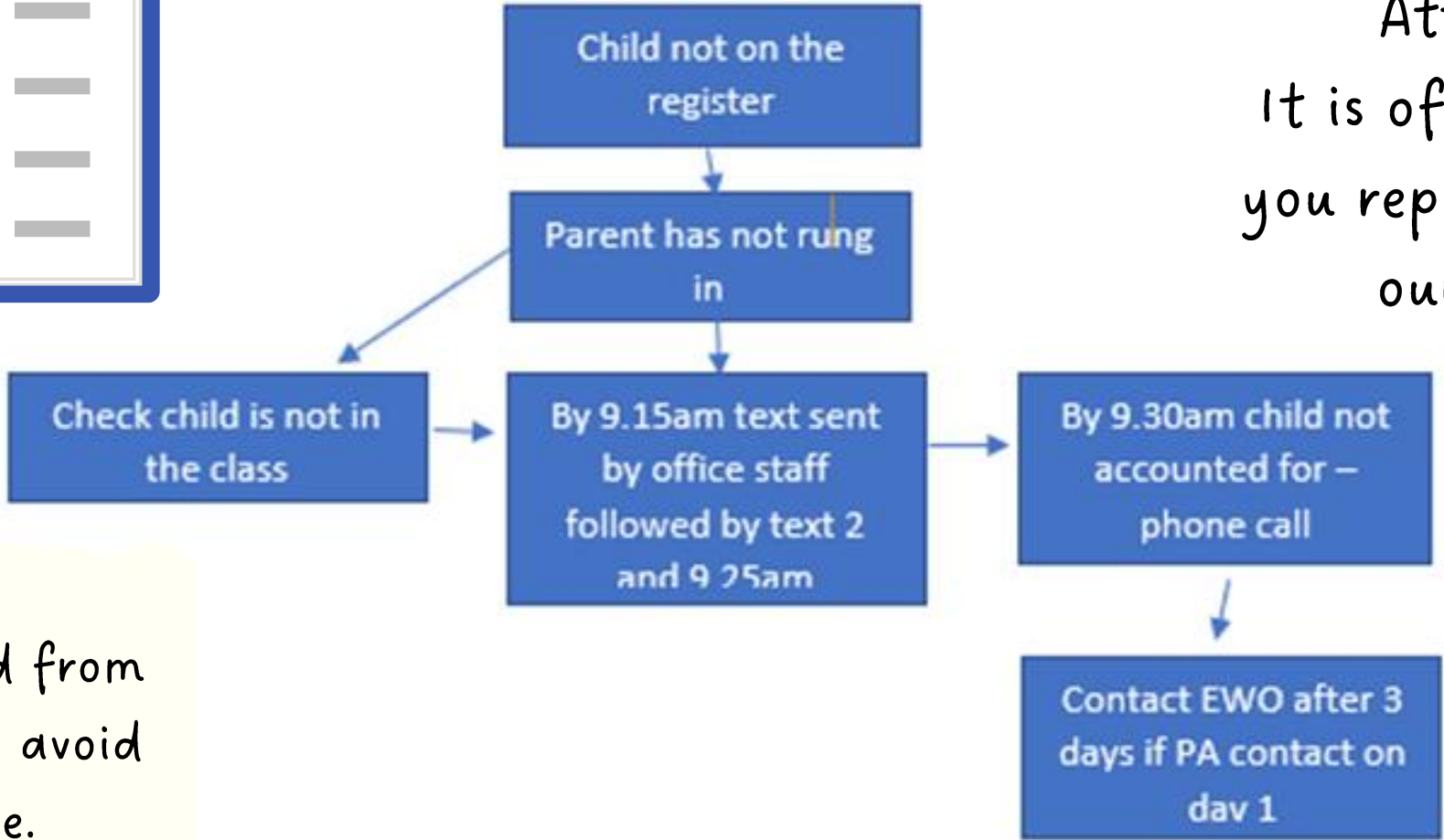
Reports are sent three times a year at the end of every term. Parent's Evenings are then run twice a year at the end of Autumn and Spring half terms in order for staff to inform you of successes and next steps. Parent's evenings can be booked via Arbor.



ATTENDANCE



Attendance – Graduated Response



Attendance is tracked daily
It is of the up-most importance that you report absences. This is to support our safeguarding procedures

- ✓ Forming good habits
- ✓ Supports progress
- ✓ Increased wellbeing
- ✓ Supports to build friendships

Holiday request forms can be collected from the school office. We encourage you to avoid taking holidays within school time.

National or Above	96.4-93%	93-90%	Below 90%
Letter 5 (sent when back to above National expectation) Pencils End of term certificate	Register inspection Letter 1 home Class teacher 'we miss <u>you</u> texts' Offer support to improve attendance Phone conversation with parent	Letter 2 sent home Continue to offer support Request medical evidence Offer to administer medicine at school Head to ring parents Class teacher sending 'excited for the week ahead/ well done for a brilliant week' text	Letter 3 sent home Referred to EWO Office to share attendance breakdown with class teachers
			Persistent Absence Attendance clinic Home visit Referral to Local Authority-fines?
Office, Head & Class Teacher	Office & Class Teacher	Office, Head & Class Teacher	Office, Head, Class Teacher & EWO
Improving Attendance (at any point within the cycle)			
Letter 4 sent home (when signs of improving attendance) Postcard for improving attendance			
Head & Class Teacher			

POSITIVE BEHAVIOUR MANAGEMENT

<https://www.knypersley.staffs.sch.uk/wp-content/uploads/2023/08/Knypersley-Positive-Behaviour-Policy-23-24-5.pdf>

Don't forget **PIP RIP**
Praise in Public, Reprimand in Private

Ladder	Explanation
Wow!	To recognise any wow moments – learning/effort/engagement of children in the classroom, supported by House points and class reward
Super Learning	To recognise effort/achievement in a child's learning or attitude to learning, supported with house points
Excellent effort	To praise a child for good contributions/engagement/behaviour in the classroom, supported by house points
Ready to learn	All children to start here each morning. Reflect on children's attitudes to learning and the school rules.
Reminder – Make better choices	A reminder will be given to the child to make a better choice and adapt their behaviour to suit the learning environment. Ensure all reasonable adjustments have been made so that they can access learning. Staff to draw attention to the model of behaviour they do want in the classroom (Positive discipline)
Teachers Choice	The choice is taken away from the child as they cannot make the correct choices, the child will reflect on their behaviour. CT will then discuss their behaviour using the restorative conversations and scripted responses to support these discussions. The child will be allowed another chance to adapt their behaviour and follow the school rules.
Red card	Child will complete a reflection sheet and discuss the incident. These conversations will use the scripted responses. Parents will be informed and the incident will be logged on ARBOR

USE NOTE: All of the above actions will be used consistently across the school and class
ers will use their professional judgement regarding actions to take at the most appropriate
It is occasionally possible to leap or accelerate movement for certain behaviours
ayed. Aggressive behaviour, fighting or swearing will trigger consequences and lead
diately to recording on Arbor. In these cases, the teacher will use her/his professional
ment to decide whether senior leaders should be asked to intervene immediately.



Our 3B rules are consistent from nursery to Year 4 which supports children in understanding expectations for behaviour.

Each class starts the year by writing their own class 3B expectations which develop over the years as they do themselves.

Our Positive Behaviour Policy is based upon restorative conversations and practice. Ensuring all children use mistakes as a chance to learn and better themselves.

Parents are notified if their child reaches a 'red card'. This will mean that your child has needed multiple reminders and have not been able to follow the 3Bs over a period of time.

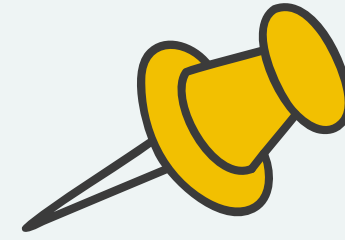
If your child reaches 'WOW' this is down to them following the 3B expectations consistently enough to reach a reward. Moving to WOW is not done due to a one off event or learning achievement.

Follow the 3B's





CLASS WEBPAGES/ CURRICULUM OVERVIEWS



Our year group page hosts a wealth of information that staff refer to throughout the year such as:

- Curriculum Overviews – Overview of learning over the year. This is a great way to pre-teach or to engage with learning theme's as your child is immersed within them in school.
- Class Webpages
- Curriculum drivers i.e. Careers Week, Faith in Focus Etc.

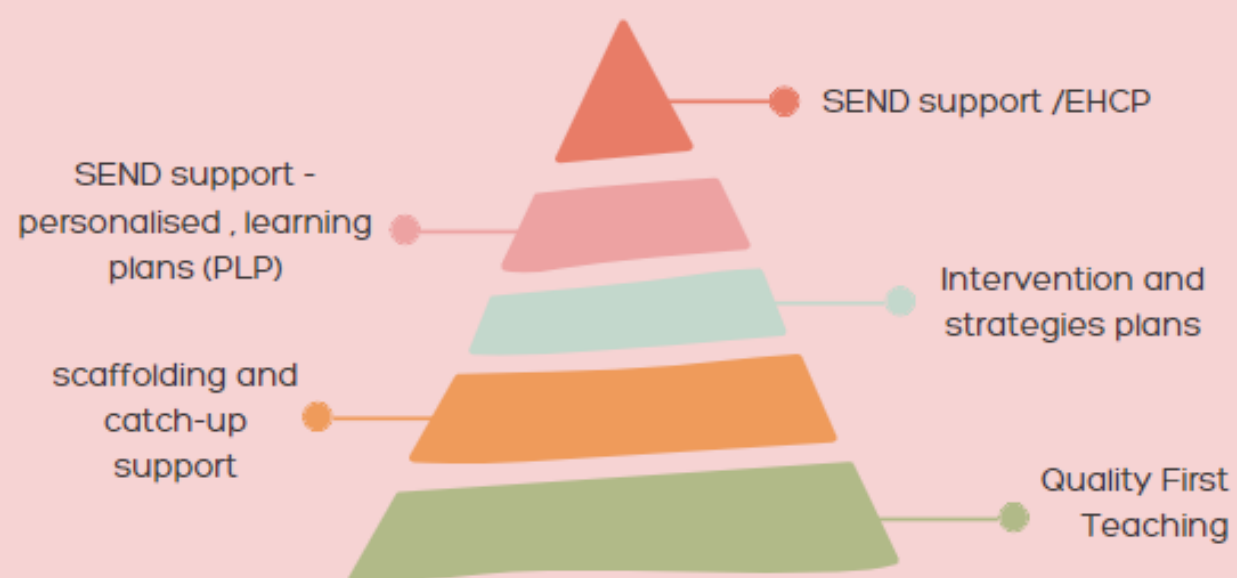




SEND SUPPORT AT KNYPERSLEY FIRST SCHOOL



Graduated Response



Hello, I am Miss Leese. I am the school SENDCO.

My role at Knypersley First School is to ensure that every child feels included, championed and most importantly - happy. I ensure the best quality support through personalised provision and intervention as well as the organisation of specific support through outside agencies.

If you would like to know more about my role and the SEND process here at Knypersley, please feel free to contact me on the contact details provided - I am available every Wednesday from 3:30pm.

Families' Health and Wellbeing

School Nurse Community drop in

For parents/carers of 5-19's and young people not in education

2nd Monday of the Month 1.30-4.30pm

The School Nurse is here to help your child feel healthy, happy and safe during their school years and to get the best from their education. If you have any concerns about their health and wellbeing please drop in to chat.

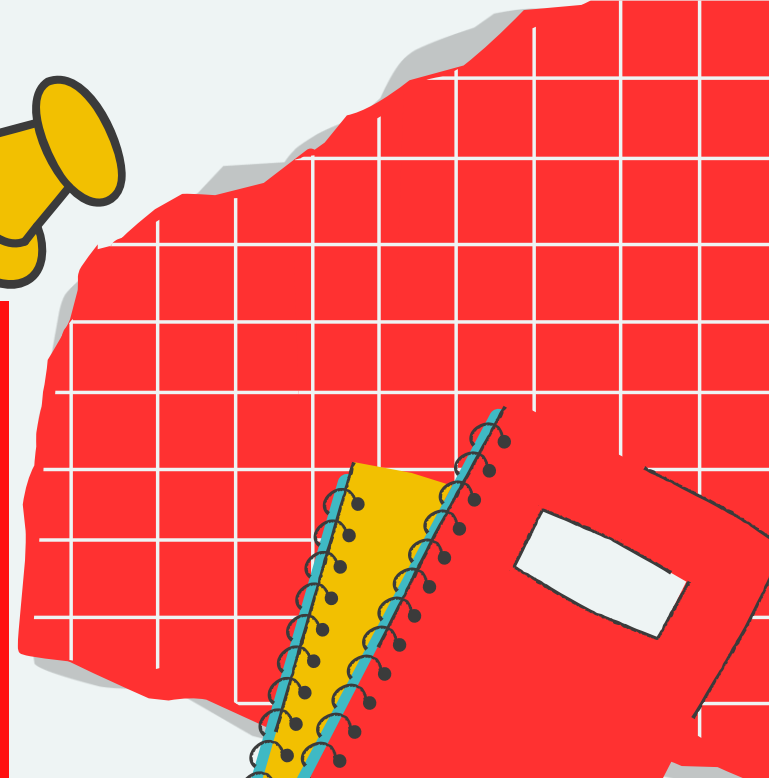
Biddulph Children's Centre
Albert Street
Biddulph ST8 6DT

We provide a confidential and friendly service

www.mpft.nhs.uk/services/health-visiting-and-school-nursing




BEHAVIOURS FOR LEARNING



Active Learning

I can concentrate
I can keep on trying
I am proud of my achievements



Creative & Critical Thinking

I have my own ideas
I can make links
I can choose ways to do things



Playing & Exploring

I can play and explore
I will try new things and have a go
I like to take part in pretend play

LEARNING LEADERS

EVERYONE AT KNYPERSLEY FIRST SCHOOL IS A LEADER - WE ARE LEARNING LEADERS!

WE USE THE **5B'S** DAILY TO SUPPORT US TO LEAD OUR LEARNING...



BRAIN

We always take a moment to think carefully in order to retrieve information that might already be in our brains.



BOARD

We use the working walls, displays and interactive whiteboards for scaffolding and sometimes we are able to find clues to support our learning.



BOOK

We have access to our own workbooks and can use marking feedback or previous lessons to aid our learning. We might also have access to books such as non-fiction texts and dictionaries that can aid our learning.



BUDDY

We are able to ask for support from our peers as sometimes they can explain learning to us in a way that might just help us to understand. They might even show us where to go for scaffolding support that helped them!



BOSS

We can ask our teachers when we have tried to be as independent with our learning successes as possible. Our teachers understand how we learn and can use extra resources and 'we dos' to support our learning.







NURSERY ESSENTIALS

We are a healthy school and promote water in bottles and healthy lunchboxes. Please speak to a member of staff if you require support with this.

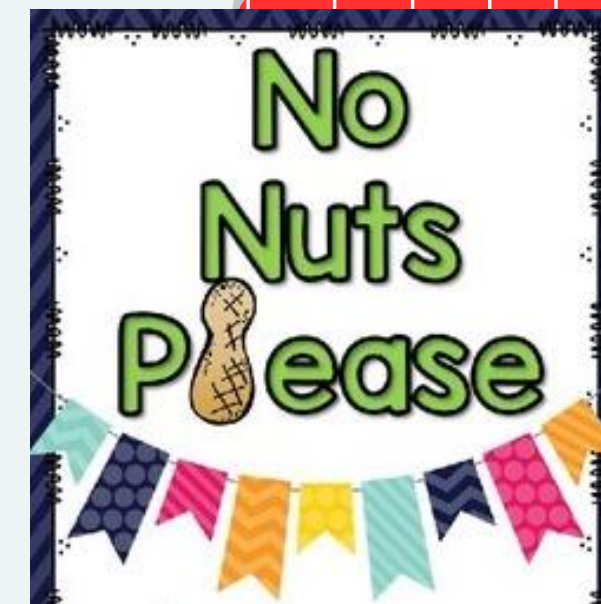


Please can all medication be signed into school via the main office. No medicine will be accepted on the door.



EYFS Uniform:

Black Sports Jumper
Red Polo Top
Black Jogging bottoms/ Leggings
Black Velcro Trainers



We are a nut free setting due to allergies identified. Thank you for your support with this.

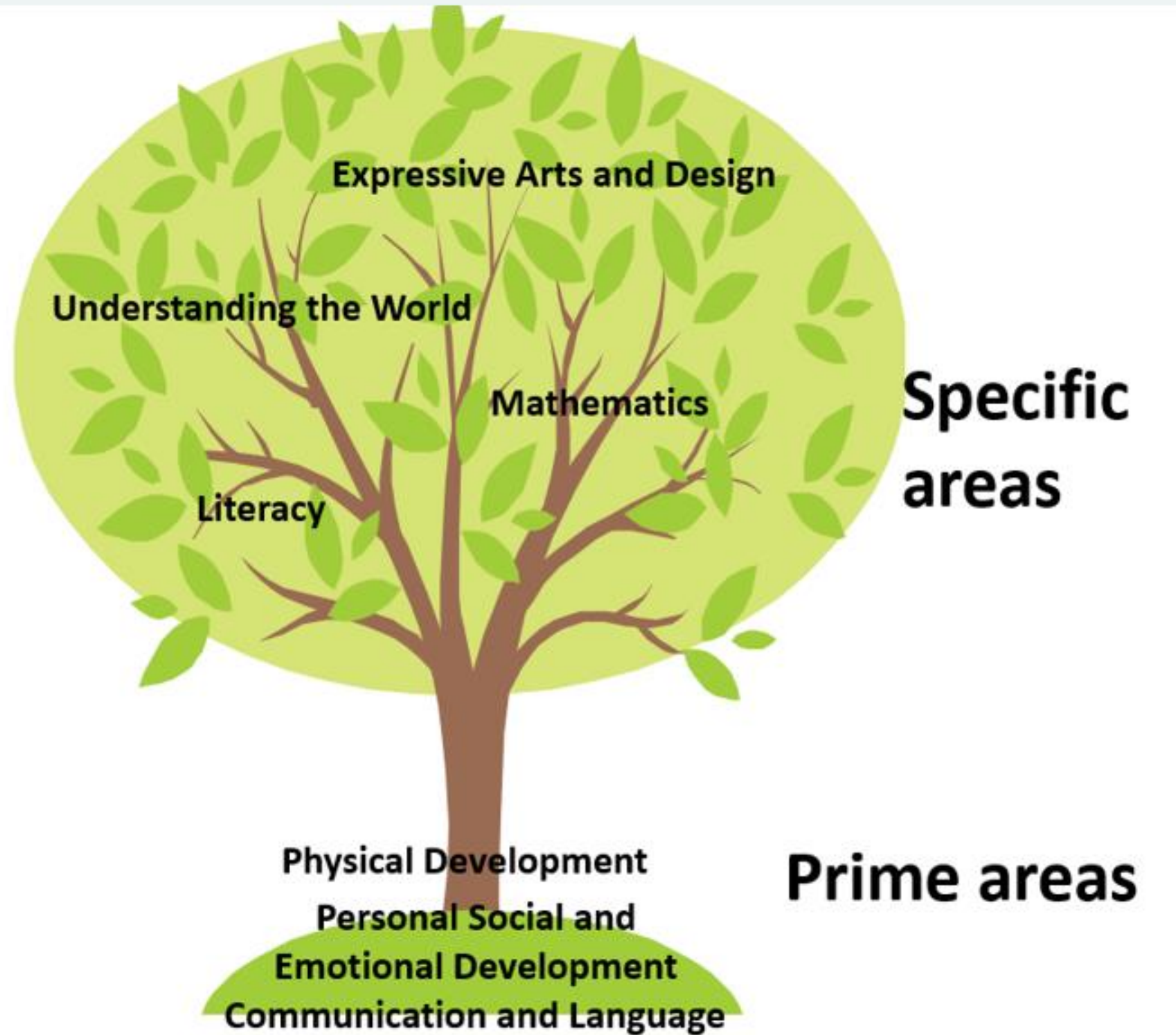
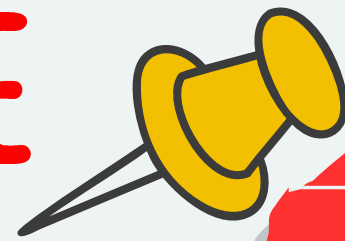


All uniform is required to be the same therefore items can be swapped or misplaced. Please support staff in returning items by clearly labelling all items including bottles, hats, coats etc.



NURSERY THROUGHOUT THE YEAR

<https://www.knypersley.staffs.sch.uk/nursery/>

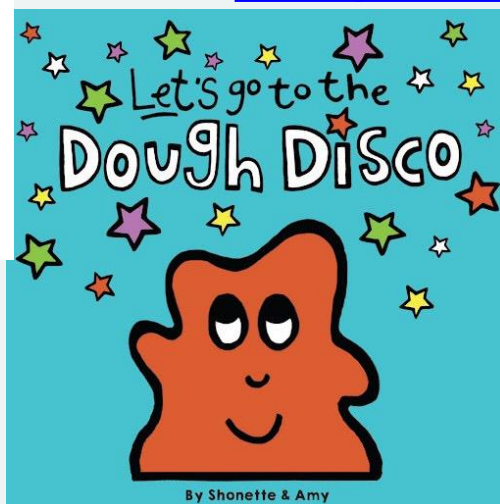




SUPPORTING YOUR CHILD AT HOME



Dough Play will support your child's fine motor development – Youtube 'Dough Disco'



Ten Town – Introduction to numbers

- WEEKLY DROP-IN SESSIONS
- PARENT'S EVENING
- REPORTS
- EVIDENCE ME
- LEARNING TOGETHER SESSIONS



Playing games with your child will support with personal and emotional development.



BENEFITS OF READING Bedtime Stories TO KIDS

It Improves Logical Skill Development

It Inculcates and Improves Communication Skills

It Lowers Stress Levels

It Significantly help to Brain Development

It Develops the Emotion of Empathy

It Encourages Love for Reading

www.onlinecollegestreet.com

Visit your local park regularly to support your child's gross motor development i.e. balance, core strength etc.



Our school Phonic and Early Reading scheme is Little Wandle – In Nursery we follow the Foundations of Phonics to promote listening and pronouncing sounds.



EXCITING EVENTS

Forest School

Outdoor Explorers



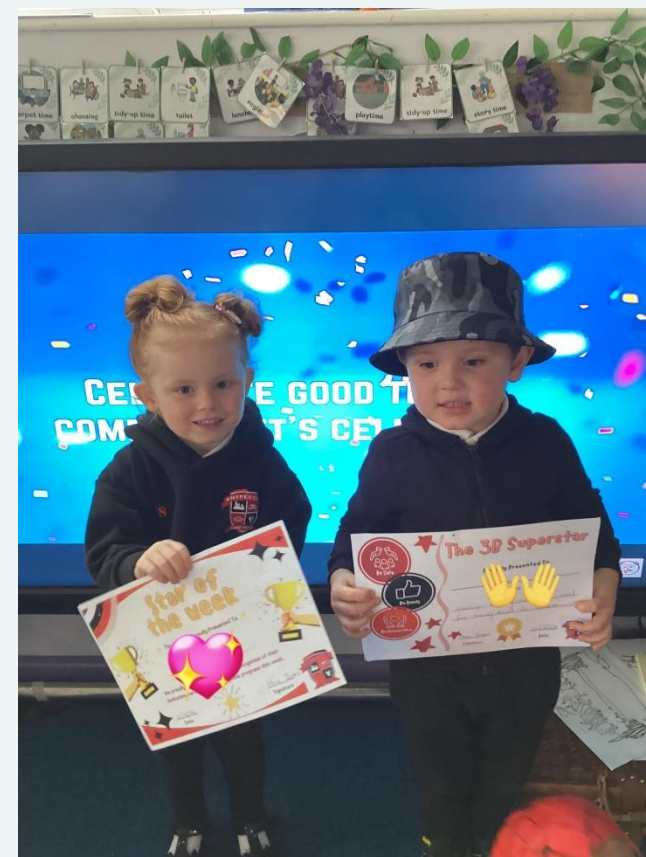
School disco!



Swimming



Celebration Assembly



School Trips

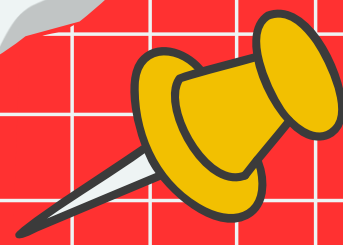


INFORMATION PACKS

Please ensure that before June 20th (Transition Day)

You have returned forms within the Welcome To Pack
that you will be given tonight.

This is to ensure that we have all details to support
your child to stay independently for the session.



THANK YOU!

Do you have any questions for
me before we go?

